



100x200 mm



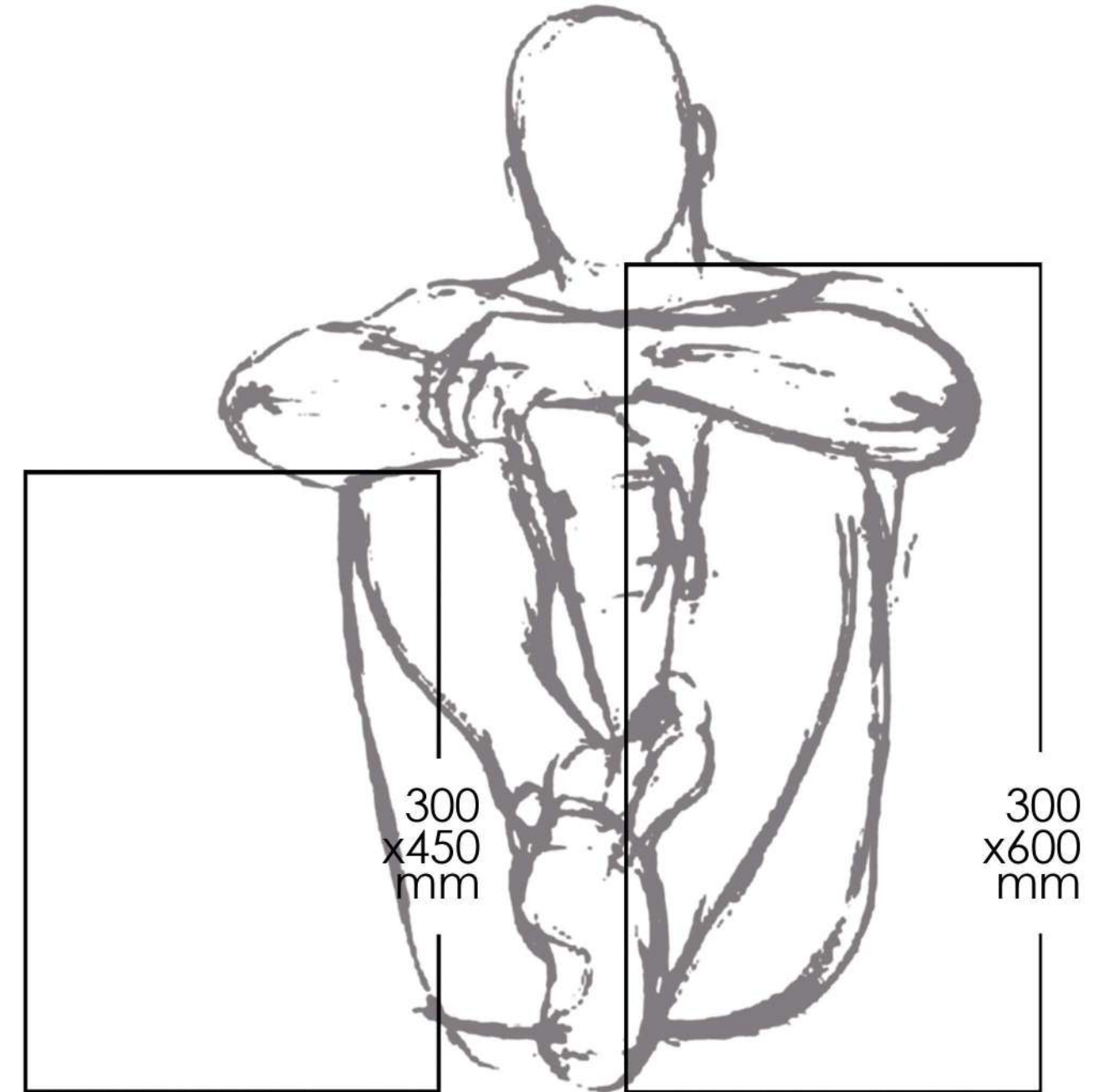
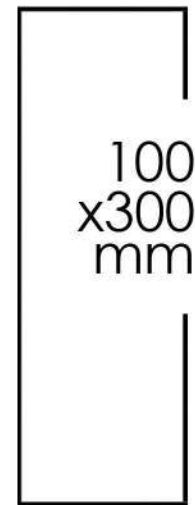
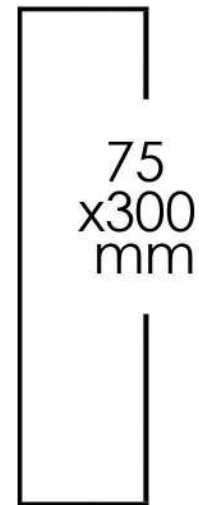
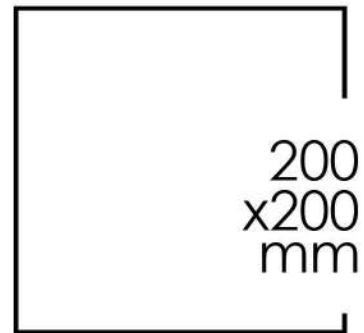
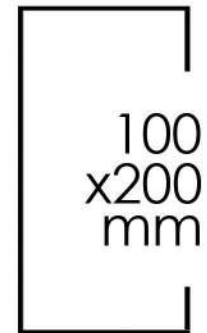
Get a size

THAT SUITS YOUR SPACE

GGCL Leads you to exclusive timeless and premium ceramic wall tiles that are details with excellence. Each tile is made using state of the art technology making them tough, Long-lasting & easy to maintain.

[DOWNLOAD BROCHURE](#)

[TECHNICAL DETAILS](#)



WEAREGGCL

-GRUPO GRIFFIN CERAMICA LLP

Is a world leader in the design, production and distribution of high quality ceramic, porcelain & mosaic tiles for residential, commercial and industrial architecture.

it's not
about
ideas
it's about
making
ideas
happen





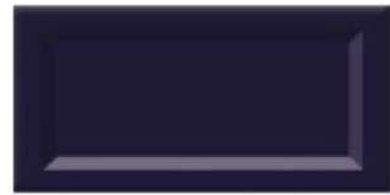
LIGHT KHAKHI



RED



ROYAL BLUE



COBALT BLUE



ROYAL GREEN



BLOOD RED



CYAN BLUE

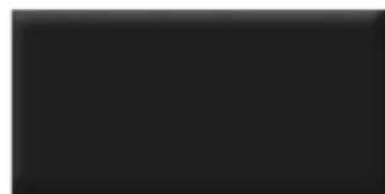




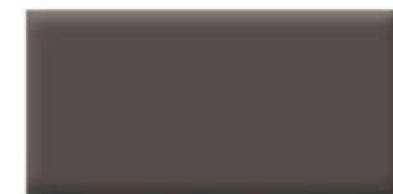
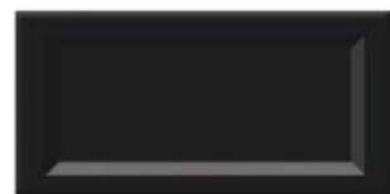
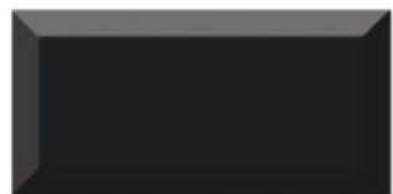
SORENTO BLUE



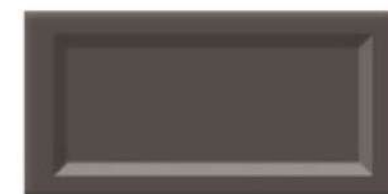
AQUA GREEN



JET BLACK



CEDAR BROWN



LEMON YELLOW



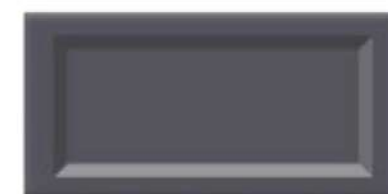
CHARCOL GRAY



MANGO YELLOW



DARK GRAY





SNOW WHITE



PINK



TIFFANY BLUE



IVORY



GRAY



ICE GRAY



LIGHT GRAY

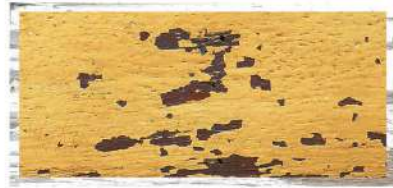


STEEL GRAY





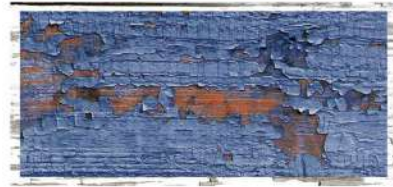
2001 HL-1



2001 HL-4



2001 DK-1



2001 HL-2



2001 HL-5



2001 HL-3



2001 HL-6

MATT





2002 LT-1



2002 HL-3



2002 HL-6



2002 HL-9



2002 HL-1



2002 HL-4



2002 HL-7



2002 HL-10



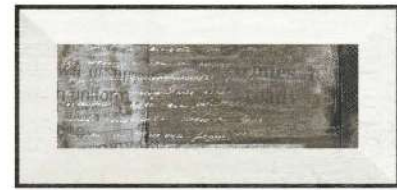
2002 HL-2



2002 HL-5



2002 HL-8



2002 HL-11



2002 HL-12



2002 DK-1



MATT



2003 HL-1



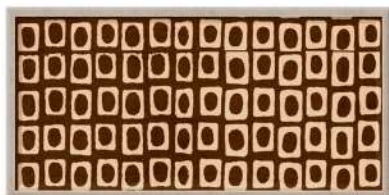
2003 HL-4



2003 DK-1



2003 HL-2



2003 HL-5



2003 HL-3



2003 HL-6



MATT

100x200 mm



2004 LT-1



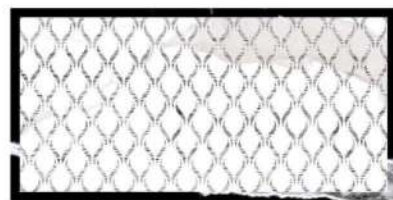
2004 HL-3



2004 HL-6



2004 HL-9



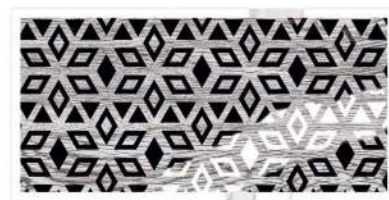
2004 HL-1



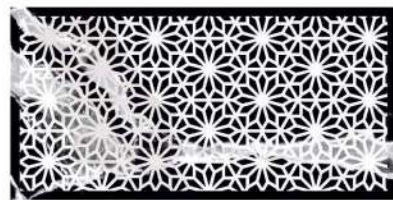
2004 HL-4



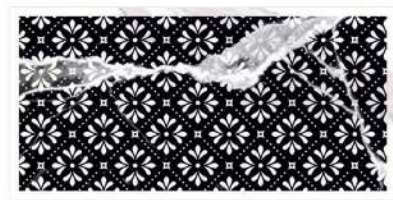
2004 HL-7



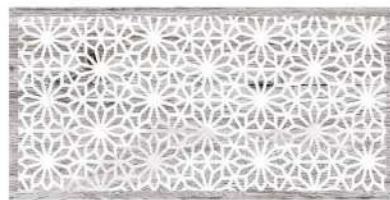
2004 HL-10



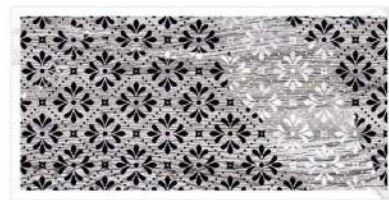
2004 HL-2



2004 HL-5



2004 HL-8



2004 HL-11



2004 HL-12



2004 DK-1



MATT



2005 LT-1



2005 HL-3



2005 HL-6



2005 HL-1



2005 HL-4



2005 DK-1



2005 HL-2



2005 HL-5

MATT





2006 HL-1



2006 HL-4



2006 HL-7



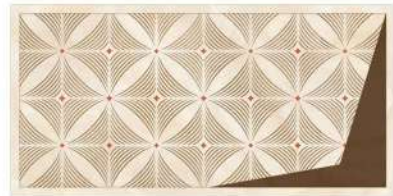
2006 HL-2



2006 HL-5



2006 HL-8



2006 HL-3



2006 HL-6



2006 DK-1



MATT



2007 LT-1



2007 HL-3



2007 HL-6



2007 HL-1



2007 HL-4



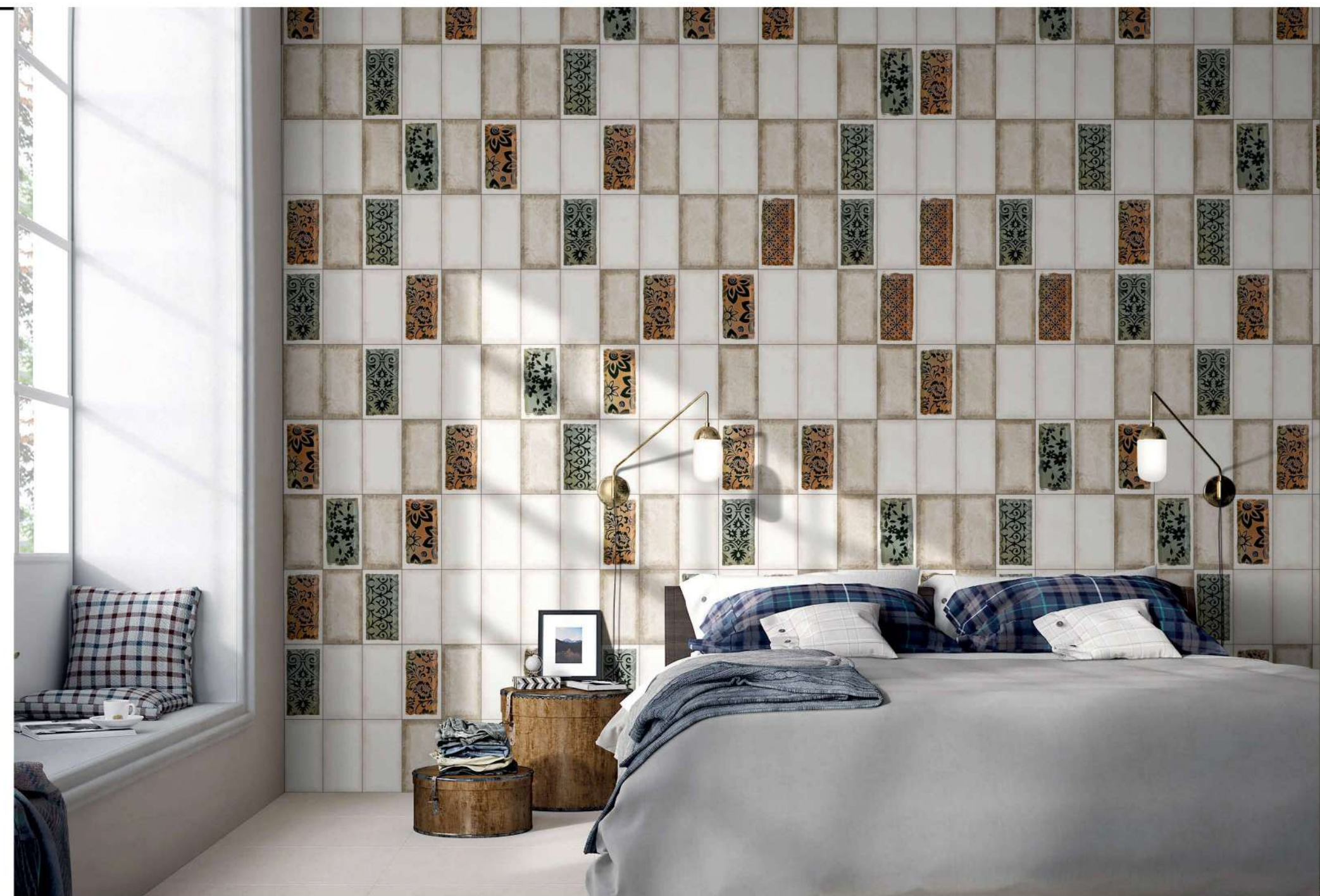
2007 DK-1



2007 HL-2



2007 HL-5



MATT



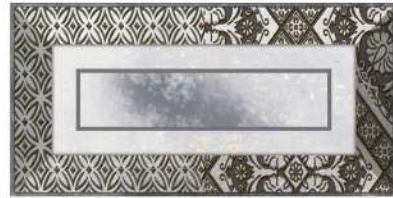
2008 LT-1



2008 HL-3



2008 HL-6



2008 HL-1



2008 HL-4



2008 DK-1



2008 HL-2



2008 HL-5

MATT





2009 HL-1



2009 HL-4



2009 DK-1



2009 HL-2



2009 HL-5



2009 HL-3



2009 HL-6

MATT





2010 HL-1



2010 HL-4



2010 DK-1



2010 HL-2



2010 HL-5



2010 HL-3



2010 HL-6

MATT



TECHNICAL SPECIFICATION

| CHARACTERISTICS | EURO STANDARD | VALUE |
|--|--------------------------|--|
| Dimension & Surface Quality | | |
| Dimension & Surface Quality | ± 0.5% | ± 0.2% |
| Deviation in Thickness | ± 0.6% | ± 0.2mm |
| Straightness Of Sides | ± 0.3% | ± 0.2% |
| Rectangularity | ± 0.5% | ± 0.3% |
| Surface Flatness | ± 0.5% | ± 0.3% |
| Surface Quality | Min 95% | Min 96% |
| Physical Properties | | |
| Water Absorption | > 10% | > 14-17% |
| Bend Strength | > 150Kg./cm ² | > 200-250Kg./cm ² |
| Scratch Hardness (Moh's) | Min 3 | Min 3 |
| Crazing | 1 Cycle | No Craxing at 2 Cycle |
| Chemical Properties | | |
| Staining Resistance | Min Class 2 | Resistance To All Acids And Alkalies |
| Household Chemical | Min Class B | Household Chemicals Except Hydro Fluric Acid |
| Thermal Properties | | |
| Thermal Shoke | Resistant to 10 Cycle | Conforms |
| Thermal Expansion | Max - 9E - 06 | Conforms |

PACKING DETAILS

| Dimension (mm) | Tiles per Box (Pcs) | Area Coverage Per Box (Sq.ft.) Approx | Area Coverage Per Box (Sq.m.) Approx | Weight Per Box (Kg.) Approx | Thickness (mm) Approx |
|----------------|---------------------|---------------------------------------|--------------------------------------|-----------------------------|-----------------------|
| 75x300mm | 44 | 10.65 | 0.99 | 13.20 | 8 |
| 75x150mm | 56 | 10.33 | 0.96 | 13.00 | 8 |
| 108x108mm | 80 | 10.01 | 0.93 | 12.70 | 8 |
| 100x300mm | 33 | 10.65 | 0.99 | 14.00 | 8 |
| 100x200mm | 50 | 10.76 | 1.00 | 12.00 | 8 |
| 100x400mm | 24 | 10.33 | 0.96 | 12.80 | 8 |
| 150x150mm | 44 | 10.65 | 0.99 | 13.70 | 8 |
| 200x200mm | 25 | 10.76 | 1.00 | 13.00 | 8 |

Note:

- Size / shade variation is inherent in ceramic tiles, in case of any complain its should be brought to our dealer's notice before laying the tiles.
- Color shown are indicative only. Check actual tiles for exact color.
- The information contained in this catalogue are accurate as possible, but cannot be considered as legally binding.
- Customers are advised to inspect a sample of the tiles before ordering.
- The company reserved the right to change the specifications without prior notice.

24 YEARS
1997 | 2021

GruppoNueva
one group - one mind - one vision



GRUPO GRIFFIN CERAMICA LLP

8-A, National Highway, Lakhadhirpur Road, Ghuntu,
Morbi-363642, Gujrat, INDIA.

Phone Number : +91 90819 88855

E-mail: hello@ggcl.in

Web: www.ggcl.in